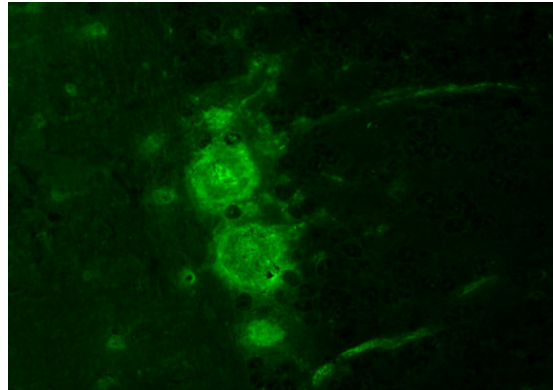


Article numbers and package sizes

MYAS1-001 (8 Determinations)
MYAS1-002 (16 Determinations)
MYAS1-003 (24 Determinations)

REC-001 (8 Determinations)
REC-002 (16 Determinations)
REC-003 (24 Determinations)

PKC-001 (8 Determinations)
PKC-002 (16 Determinations)
PKC-003 (24 Determinations)



Detection of human anti-PKC γ autoantibodies on primate cerebellum (source: ravo Diagnostika)

References:

1. L.Sabater, M.Titulaer, A.Saiz, J.Verschuuren, A.O.Güre and F.Graus. SOX1 antibodies are markers of paraneoplastic Lambert-Eaton myasthenic syndrome. Neurology, 2008; 70:924-928.
2. E.Lübke, A.Freiburg, G.O.Skeie, B.Kolmerer, S.Labeit, J.A.Aarli, N.E.Gilhus, R.Wollmann, M.Wussling, J.C.Rüegg and W.A.Linke. Striational autoantibodies in myasthenia gravis patients recognize I-band titin epitopes. J Neuroimmunol, 1998; 81:98-108
3. A.S.Polans, D.Wittkowska, T.L.Haley, D.Amundson, L.Baizer and G.Adamus. Recoverin, a photoreceptor-specific calcium-binding protein, is expressed by the tumor of a patient with cancer-associated retinopathy. Proc.Natl.Acad.Sci., 1995; 92:9176-9180
4. R.Höftberger, G.G.Kovacs, L.Sabater, P.Nagy, G.Racz, R.Miquel, J.Dalmau and F.Graus. Protein kinase C γ antibodies and paraneoplastic cerebellar degeneration. J Neuroimmunol, 2013; 256:91-93



Oltmannsstrasse 5
D-79100 Freiburg
Telefon: +49 (0)761 40 74 88
Fax: +49 (0)761 40 74 77
E-Mail: info@ravo.de
Internet: www.ravo.de

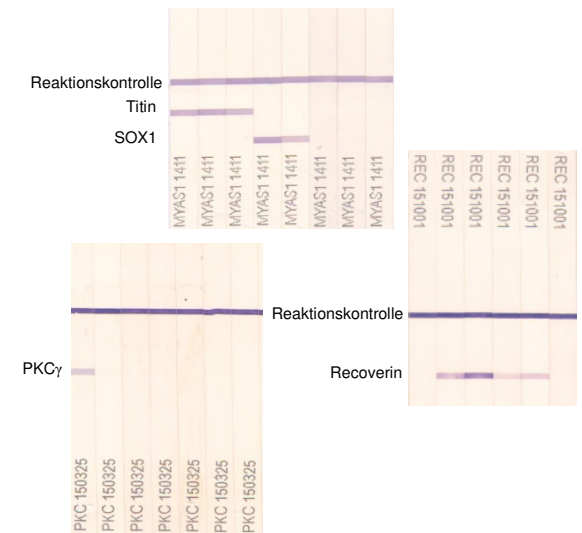


11/2015



New

ravo Line Assays



ravo SOX1/Titin Line Assay

ravo Recoverin Line Assay

ravo PKC γ Line Assay

***RAVO* SOX1/Titin Line Assay**
Recombinant Line Assay for the
Detection of Autoantibodies to
SOX1 and Titin.

In patients with Lambert-Eaton Myasthenic Syndrome (LEMS) autoantibodies to **SOX1** are considered to be a marker for small cell lung cancer (SCLC). In single cases autoantibodies to SOX1 have been detected in patients with paraneoplastic limbic encephalitis.

Titin: Autoantibodies to Titin, the giant elastic intracellular protein of the striated muscle are detected in 70 -90 % of patients with Myasthenia gravis with an underlying thymom. Autoantibodies to Titin correlate with the severity of the disease. Anti-Titin Autoantibodies belong to the group of “partially characterized” antineuronal antibodies.

***RAVO* Recoverin Line Assay**
Recombinant Line Assay for the
Detection of Autoantibodies to Re-
coverin.

Recoverin is a photoreceptor –specific calcium-binding protein with a molecular weight of ~ 23 kD. It has been identified as autoantigen in a degenerative disease of the retina called CAR (= Cancer Associated Retinopathy), a paraneoplastic syndrome, which leads to the degeneration of photoreceptors and hence to blindness. Usually the underlying tumor is a small cell lung cancer (SCLC).

***RAVO* PKC γ Line Assay**
Recombinant Line Assay for the
Detection of Autoantibodies to Pro-
tein Kinase C gamma.

Autoantibodies to Protein Kinase C gamma (PKC γ), an enzyme of ~ 80 kD have been detected in patients with paraneoplastic cerebellar degeneration. The immunofluorescence staining pattern shows staining of the cytoplasm, dendrites and axons of Purkinje-cells.

Procedure (Short Description)

- Cover the strips with 2 ml dilution buffer. Add 10 μ l specimen and mix carefully (end-dilution: 1 : 200).
The positive control is ready to use. No further dilution is necessary.
- Incubate for 30 minutes at room temperature on a rocking table.
- Wash five times with diluted wash buffer.
- Add 2 ml alkaline phosphatase IgG conjugate, ready to use, per strip.
- Incubate for 30 minutes at room temperature on a rocking table.
- Wash five times with diluted wash buffer.
- Incubate each strip in 2 ml ready to use substrate-solution.
- Incubate for 20 minutes at room temperature until the bands become clearly visible. See control scan for comparison.
- Transfer the strips to distilled water to stop the reaction. Put the strips onto filter paper and let them dry. Store the strips in the dark.